

SEASONS OF GREENE VI

September 26 – October 26

Athens Cultural Center



A collection of paintings depicting special properties protected by Greene Land Trust and properties worth protecting.

GREENE LAND TRUST



MISSION

Greene Land Trust permanently protects naturally and culturally significant lands in Greene County and helps people connect with these special places.

VISION

We envision a Greene County where protected lands — from the Hudson River to the Catskill mountaintops — support clean water, wildlife habitat, working farms, vibrant communities, and meaningful connection to nature. Together with partners and local residents, we are building a future where land conservation is trusted, visible, and valued as essential to our region's identity, economy, and quality of life.

BOARD OF DIRECTORS

| | |
|-----------------------------------|------------------|
| Bob Knighton, <i>President</i> | John Cameron |
| Hal Brodie, <i>Vice President</i> | Charlotte Carter |
| Janet Angelis, <i>Treasurer</i> | Joel DuBois |
| Jim Coe, <i>Secretary</i> | Ryan Jewett |
| Leslie Albright | Frank Plattner |
| Jennie Allen | Mark Vian |



Cover Image: *Morning Sun on the Hudson*, James Coe

PRESIDENT'S WELCOME

Greene Land Trust is dedicated to protecting the many places that make Greene County special:

- *Scenic vistas* that inspired the Hudson River School of painters and that have attracted visitors to our mountains and valleys for generations
- *Agricultural lands* that represent an essential part of our heritage and economy
- *Open spaces* that provide habitat for an abundance of wild creatures and an array of recreational opportunities.

We work with many partners to protect these places now and for future generations. Some, such as our largest property, the Cocksackie Creek Grassland Preserve, we own outright. Others, such as Brandow Point, we manage for their owners. Still others, such as the Octaparagon Wildlife Refuge, the Flegel farm and our most recent addition, Abeel Overlook, we protect with voluntary conservation agreements.

For *Seasons of Greene VI*, we invited outstanding regional artists to celebrate these and other special places in Greene County with artwork created through the change of seasons. The resulting paintings capture a range of moods and a variety of landscape types. From winter through summer, these paintings evoke many flavors and seasons of color and light—from dry stick-season, to fully snow-covered deep winter, to the ochres of mud season, to the rosy-tinted hues of early spring, to the dense vivid greens of late May, and to the tired greens, quiet siennas, and shocking magenta of late summer.

Seasons of Greene VI is a benefit for the Greene Land Trust. A portion of the proceeds from the sale of all paintings goes to support the work of the Greene Land Trust to protect places that make Greene County special.

Thank you to all the artists, our sponsors, and to you for your support.



Bob Knighton,
President, Greene Land Trust

PROPERTIES PROTECTED



The Mawignack Preserve, along Catskill Creek was purchased by Scenic Hudson and is managed by GLT. The 150+ acre property on Snake Road in Catskill includes two miles of Catskill Creek shoreline. An important multi-year project, now underway, is the planting of 1000+ trees to restore the floodplain forest.



The Willows, also known as the William Brandow House, was built in 1788 and is listed on the National Register of Historic Places. GLT has done a lot of work to restore this historic farmhouse. An education room was completed on the ground floor that we use to support our programs to engage the community. The east facing porch was rebuilt in 2018-2019.



The Pine Lane conservation easement area near Route 23 in Cairo not only contains constructed and improved wetland as mitigation for wetland lost elsewhere, but it also restores land that was previously laid bare by a gravel and stone mine. Planting on the reclaimed land is still growing in at the time of this photo.



The 100+ acre **Flegel Farm** in New Baltimore is protected by a conservation easement donated by the owner. The farm contains agricultural land determined to be of statewide significance as well as woodlands. It is the first farm protected by GLT. You can view a video about the Flegel family farm at greenlandtrust.org.

BY GREENE LAND TRUST



Brandow Point is 62 acres of forest and field adjacent to The Willows. It is owned by NYSDEC and is managed by GLT. It includes more than 1.5 miles of trails open to the public and 1/2 mile of Hudson River waterfront with important freshwater tidal wetlands. Brandow Point and the Willows are located on Route 385 in Athens.



The 400+ acre **Coxsackie Creek Grassland Preserve**, located in Coxsackie, provides important habitat for the NYS threatened Northern Harrier and Short-eared Owl. This was GLT's very first project and remains our biggest property. More than 100 acres were added to this protected land in 2019. A 1.3 mile public walking trail opened in 2024.



At the confluence of the Grapeville and Potic Creeks in Earleton, the **Octaparagon Wildlife Refuge** is protected by a conservation easement generously donated by the owner. The land contains extensive wetlands, forests and beautiful stone walls. The public is welcome to use the trails.



The **Coxsackie / Climax Creek Wetland** is located between Route 9W and Kings Road in Coxsackie. This property is owned by GLT and protects an important part of the watershed of Coxsackie Creek before it passes through the Grassland Preserve and flows into the Hudson River.



In Memoriam

JAMES CRAMER

Potic Creek at Octaparagon, Oil on Linen, 16" x 20"

"Jim Cramer was one-of-a-kind. He was a true artist – the real deal... He could be found outside painting nearly every day of the year, and amazingly, every session produced a finished painting! Jim would 'capture the day', as he would say."

This past April, Greene Land Trust lost a valued member of its community. Jim Cramer was an accomplished local landscape painter and part of our *Seasons of Greene* family, a group of artists that gather to paint the Greene Land Trust properties. He was also an integral part of the *Seasons of Greene* annual art show and fundraiser since its inception, helping to install the show and contributing his artwork to the exhibit. Jim's friendship and artistic talents will be greatly missed.

CURATOR'S NOTE

The relationship between landscape painter and land is an intimate one. The artist spends hours looking deeply; exploring different moods; tidying up the flaws; striving to delve into the essence of a place. It was with this special bond in my mind between painter and subject that I conceived of the original *Seasons of Greene* art exhibit in 2017. I realized that a collection of paintings depicting our Greene Land Trust properties would be an effective means of introducing the public to those places – revealing the secret beauty that the experienced eyes of the painters would capture in their renditions.

The success of that inaugural show was undeniable. Not only was the exhibition well attended and thoroughly enjoyed by the community, but many of our neighbors wanted to have the paintings on their walls at home! A significant portion of the work in the show was purchased by collectors. Again in 2021 *Seasons of Greene II* was a great success. Even during a pandemic, local supporters of the Land Trust came out to enjoy an entirely new set of paintings. So, after five exhibits in the past eight years, we are excited to present *Seasons of Greene VI*. Eventually, we at the GLT hope to cultivate an audience that will support and anticipate an annual exhibition in which scores of top regional artists will be selected to participate.

The new art here, created by a dozen of the area's finest artists, provides a varied but profoundly personal introduction to nearby landscapes that are now protected by the Greene Land Trust. In addition, paintings prepared for this year's show introduce other local viewsapes that the GLT recognizes as worthy of consideration.

Landscape painting has a special power to inspire, inform and educate. The renowned Hudson River School artist Thomas Cole painted in the mid-Nineteenth Century along the exact streamside now protected within the Mawignack Preserve. For Cole, depicting the pristine, unspoiled views of the Catskill Creek and distant mountain peaks during an era when industrialization was despoiling the Hudson Valley and railroad tracks were being laid across his treasured views was a political statement – a declaration that this beauty was worth treasuring and protecting.

Today, our goals are similar. In the interest of promoting and supporting the GLT, we strive to capture the essence of the lands that the Trust stewards and to share our diverse visions with the greater community. We seek to engender support for the GLT and to further its mission to protect these magical places forever.

In this year's exhibition, we are also remembering one of our own: James Cramer. Jim lived and worked in our local community for nearly 50 years. And as a dedicated plein air landscape painter, he had discovered and was creating stunning renderings of our GLT properties long before the Land Trust even existed! We will miss him.

James Coe
Artist
Secretary, Greene Land Trust



SUE BARRASI

Hudson Horizons, Oil, 12" x 24"

Bronx born artist Sue Barrasi began painting during her childhood in the Hudson Valley. After earning a BA at the School of Visual Arts, she embarked on a brief career as an illustrator, creating various ads, book and magazine covers, postage stamps, and backdrops for theatrical productions. After extensive travel in Europe, she continued her training in painting and sculpting at the Art Students League and the Ridgewood Art Institute.



“Painting is not just my passion, it’s an addiction. Brushing strokes of energy, I attempt to mirror the dance of light. Whether I am exploring the abstract possibilities of paint, becoming inebriated by color while working plein air, or adhering directly to a studio set up, it is my intent to transfer the beauty I see onto the canvas while letting emotion guide my brush.”

Awarded numerous ribbons, grants and residencies, Sue maintains active membership in the Oil Painters of America, Salmagundi Club, National Oil and Acrylic Painters Society, American Artist Professional League, Audubon Artists, and is a lifetime member of the Art Students League.



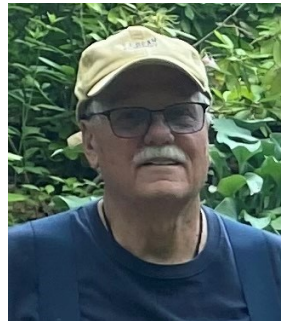
RICHARD BAZELOW

Winter Dam and Creek, Oil on Panel, 9" x 12"

Painting for me is capturing a moment in time. Using color, light and shadow to evoke a sense of peace and tranquility. Primarily self taught, contemporary artists like Louis Escobedo and Russian Zufar Bikbov have at times mentored or helped guide my representational style. I'm grateful for their insight and help.

Most of my life has been in the Hudson Valley of New York. The Catskill Mountains were to the North, Hudson River to the East and the Shawangunk Mountains to the West. Surrounded by that kind of landscape, it was easy to appreciate the many wonderful perspectives that nature offers.

When not involved in studio painting I love driving back country roads or coastal byways observing nature. Setting up along these wonderful vistas gives me a sense of peace and completeness. A member for many years of the Oil Painters of America and Mid Atlantic Plein Air Painters Association, I am currently a member of The Plein Air Artists of Columbia County NY and the Athens Cultural Center in Athens NY.





JAY BROOKS

Durham Road View, Oil on Panel, 8" x 16"

Growing up on 90 acres of farmland in Pavilion NY, Jay Brooks has always had the landscape as an integral part of his life and art. At the young age of 14, Brooks began painting under the classical apprenticeship of John Piesley and the plein air instruction of Charles Movalli, a disciple of the late Emile Gruppe. Brooks was also introduced to the pre-impressionist styles of Corot, George Inness and Asher B. Durand. In 1988, Brooks received his B.F.A. from Carnegie-Mellon University and in 1990 he received his M.F.A. from Columbia University. Being removed from his familiar bucolic surroundings, Brooks studied and painted the industrial environments of Pittsburgh and New York City.



Brooks has shown regularly in the Chelsea area of New York City, Lambertville NJ, Cody Wyoming, Rochester NY, and Sullivan County NY. In 2001, Brooks entered the Arts for the Parks competition in Jackson Hole, Wyoming and had four paintings in the top 100. In 2017, 2018 and 2019 Brooks was a participant in the Cape Ann Plein Air competition and Plein Air Easton 2018, 2019 and 2020. Brooks is also a member of the Salmagundi Club in New York City. Although Brooks' main interest in the landscape resides primarily in the scenery of upstate NY, he has also painted scenes in the American West, Puerto Rico, the Austrian and German Alps, Northern Italy, Ireland, and the out-back and rain forests of Australia.



BRUCE BUNDOCK

Willows, Gouache on Paper, 6" x 8"

Kingston, N.Y. artist Bruce Bundock has lived and worked in the Hudson Valley for over forty years. His art is situated in the realist tradition, drawing inspiration from three geographic locations: The Catskill region, Maine, and Cape Cod. He received his B.F.A. from Maryland Institute College of Art and his M.A. from SUNY Empire State College. Additional Studies include Silvermine College of Art, Artists for Environment Foundation, Williamstown Art Conservation Center and The Campbell Center for Historic



Preservation Studies. Selected exhibitions include the Arnot Art Museum, Arkell Art Museum, Schenectady Museum, Albany Institute of History and Art, The Hyde Collection, Vassar College, Muscarelle Museum of Art, College of William and Mary, Marist College, National Academy Museum, Dutchess Community College, The Salmagundi Club and Brigham Young University. Publications include American Artist Magazine, Acrylic Artist Magazine, Acrylicworks 4: Captivating Color. He was awarded and named Harry Kelber Fellow for the Arts 2016-17, SUNY Empire State College. which culminated in a solo portrait exhibit at the Harry Van Arsdale Jr. Center for Labor Studies, NYC. His work is in private and public collections.



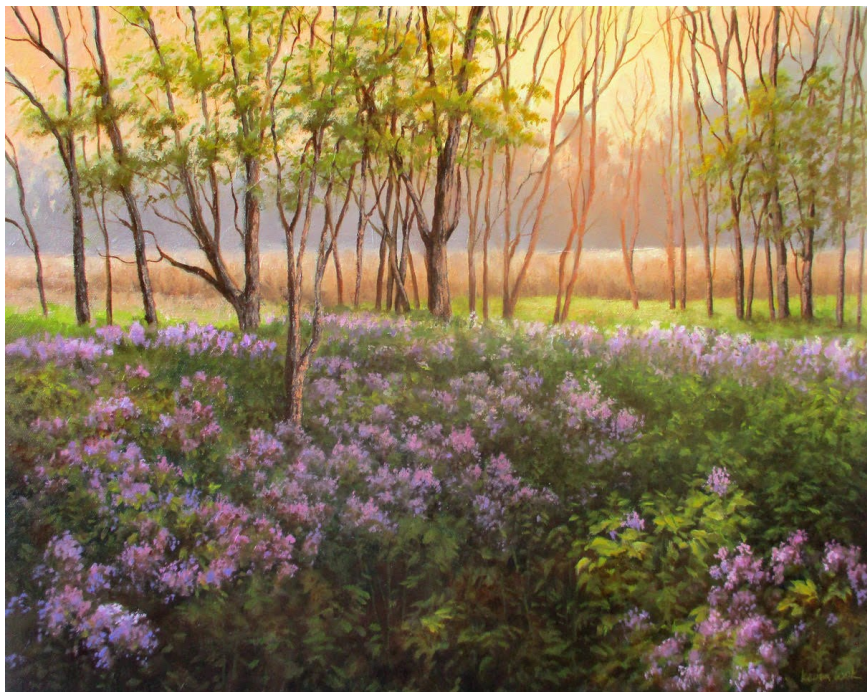
JAMES COE

Mid-Day Clouds, Oil/Linen/Board, 10" x 16"

James Coe is an artist with a passion for birds, nature, old barns, and relics of our rural heritage. With an interest in ornithology, he earned a degree in biology from Harvard. His training in art came later, as a graduate student at the Parson's School of Design. Jim began his art career in illustration and is best known as the author and illustrator of the acclaimed *Golden Field Guide Eastern Birds*. Jim's works combine his passion for landscape with a finely detailed knowledge of natural history. Jim's goal is to introduce an



element of movement, color, or interest to the landscape. Represented in the permanent collections of the New York State Museum, Museum of American Bird Art at Mass Audubon, the Hiram Blauvelt and Leigh Yawkey Woodson Art Museums, and the Bell Museum of Natural History, Jim was the subject of a feature article in the September 2017 issue of *Harvard Magazine*. His work has been featured also in *Wildlife Art*, *American Art Collector*, and *Plein Air* magazine. His paintings have appeared on the covers of *Sanctuary*, *Bird Watcher's Digest*, *Birding World*, and *The Auk*, professional journal of the American Ornithologist's Union. Jim lives with his wife Karen Scharff on the western rim of New York's mid-Hudson Valley.



KEVIN COOK

Waves Of Phlox, Oil on Canvas, 16" x 20"

Kevin Cook is an accomplished landscape painter who is strongly influenced by nineteenth century romanticism. He has received a Painting Fellowship from New York Foundation of the Arts, exhibited at the American Consulate in Hong Kong as part of the Artists in Embassies Program, and has been an educator at the Samuel Dorsky Museum at SUNY New Paltz. Kevin's work can be seen on the sets of TV's *Billions*, as well as on a CD cover by The New York Pops. He is represented in a number of galleries and has a strong regional following. The Hudson Valley Almanac has written that, "The Hudson River School of painters would easily recognize Cook as one of their own."





ROSEMARY HANSON

Hot Summer Morning, Octaparagon, Oil on Canvas Board, 14" x 11"

Rosemary O. Hanson received her BFA in Studio Art from Wells College in Aurora, New York, and studied at the Lorenzo de Medici Institute in Florence, Italy. Following graduation, Rosemary moved to New York City and began a professional career at the Metropolitan Museum of Art, where she worked for many years. While in New York, she continued painting at the Art Students' League with several notable instructors, including Gustav Rehberger. In 2006, she moved to the Hudson River Valley with her family.



Inspired by the surrounding environment, she began painting landscapes and interiors. Later, she developed a love for still lifes using local flowers and fresh produce as her subjects. Her paintings depict a loose impressionistic style. Her work has been included in several individual and group shows throughout the Hudson Valley and greater New York metropolitan area. She has participated in many plein air paintouts, some juried, which culminated in live auction.



PAULA HEISEN

Pine Trees at Octaparon West, Pigma Graphic Pen on Paper, 6.75" x 9"

A painter with studios in New York City and the Catskills, I have exhibited my work throughout the United States, with solo exhibitions in New York City, Milford, PA, Lexington, NY and Houston, TX. I received my MFA from the Yale School of Art and my BA from the College of Creative Studies at UC Santa Barbara. I also attended the New York Studio School and the Skowhegan Summer Program. Among the grants and awards I've received are three Mercedes Matters Awards from the New York Studio School, an Elizabeth Foundation Grant, a New York Foundation for the Arts grant, a Joan Mitchell Emergency Grant and an Ingram Merrill Foundation Grant. I have received scholarships to Yale, the Skowhegan Summer Program, the New York Studio School and UC Santa Barbara. I've taught at FIT (Fashion Institute of Technology, NYC), Lehman College (Bronx, NY), Oxbow Summer Program (Michigan), Yale University's Summer Program (New Haven, CT) and at UC at Santa Barbara.





LYNN PALUMBO

Teasel at the Willows in July, Acrylic and Colored Pencil on Paper, 15" x 11"

Lynn Palumbo works in mixed media, combining painting, drawing and monotype techniques. She holds an MFA in painting from SUNY New Paltz and a BFA from Ohio State in painting/printmaking. Her artwork has been exhibited at the SUNY Albany Art Museum and the Hyde Collection, Glens Falls, NY, as part of the Artists of Mohawk-Hudson Regional, SUNY Geneseo, Lederer Gallery as part of Quilt; Traditional, Non-traditional, two solo exhibits at Dutchess Community College, Poughkeepsie, NY, Emerge Gallery, Saugerties, NY, Atwater Gallery, Rhinebeck, NY, Roxbury Art Center, Roxbury, NY, Red Eft Gallery, Wurtsboro, NY, Athens Cultural Center, Coxsackie, NY, Marks at the Madellon Powers Gallery, East Stroudsburg University, PA, and a solo drawing exhibit at Starr Library, Rhinebeck, NY, among others. She taught at Dutchess Community College, Poughkeepsie, NY, for 25 years and also served as Gallery Director. She taught previously at Manhattanville College in Purchase, NY and East Stroudsburg University, PA. Complete CV information available at lynnpalumbo.com.





SUSAN STORY

Edge of the Field, Soft Pastel, 11" x 14"

Susan M. Story works in an upstate New York studio surrounded by the environment that inspired the Hudson Valley School. "I am drawn to the landscape, and intrigued by complex interweaving of lines, textures, and shapes: the chaos, as well as the order of nature." Coming from a family of artists, she left a career in fashion to pursue landscape painting. Story graduated from the Parsons School of Design where the intense and focused curriculum and a foundation of drawing prepared her for a fine art studio practice. A Signature - Master Pastelist member of the Pastel Society of America, Story serves on the Board of Governors. Story is a juried member of the Salmagundi Club and other prestigious art organizations. Story has been featured in *Pratique des Arts* magazine, the *Pastel Journal* and the 2019 book *Pure Pastel*, edited by Anne Hevener. Her recent honors include Gold, Silver and Bronze Medals and the IAPS Award For Excellence. Her awards from the Pastel Society of America include the Herman Margulies Award for Excellence, the Richard McKinley Mentorship Award in memory of Margaret Stahl-Moyer, and the Royal Talens Award.





MARLENE WIEDENBAUM

Sunrising my Heart, Pastel, 12" x 16"

Marlene Wiedenbaum PSA-MP, IAPS-MC (Pastel Society of America - Master Pastelist), has exhibited her award winning paintings internationally, including the IAP Invitational in Taiwan, the Xian Art Museum, China, and in Italy. Her work is featured in text books commissioned by the Taiwanese government and she is an International Honorable Member of the Beijing Pastel Research Academy. Wiedenbaum was selected by Hudson Valley Magazine as Best Artist 2022, and she was awarded Master Circle



Status by the International Association of Pastel Societies (IAPS) in 2022. In 2025 her large format pastel paintings are featured in the Pastel Journal and her work has been featured in several other art magazines including VIC Pastel, Victoria, Australia, Fine Art Connoisseur, Fine Art Today, Art Times, and American Artist. She teaches pastel classes & plein-air workshops at the Woodstock School of Art in the Hudson Valley. A MASTER Pastelist & Signature Member of the Pastel Society of America, and an Elected Member of the Audubon Artists Org., Marlene is currently serving on the Board of Governors of the Pastel Society of America and her work was included in the 2024 PSA Exhibit at the Butler Institute of American Art, Giffuni Gallery in Ohio. Her work is in private and public collections throughout the world and is represented in the tri-state area.



LESLIE YOLEN

Drizzly Morning, Encaustic on Wood Panel, 8" x 6"

Leslie Yolen lives and works in the Helderberg Mountains of Upstate New York. She has worked predominantly in clay and has recently taken to working in painting and sculpture as her prominent mediums. Yolen boasts a lengthy career in arts education and recently retired from her position as the Arts Education Associate at the New York State Education Department. Prior to working with NYSED, Yolen taught Visual Art in public schools for over twenty years. During her career she has organized several artist residencies and operated a



successful art studio business while directing a cooperative fine arts & craft gallery. She has exhibited at The Arts Center of the Capitol Region, NY; Albany Center Gallery, NY; Laffer Gallery, NY; Emerge Gallery, NY; The Blooming Artist Gallery, NY; The Cooperstown Art Association, NY; Truro Center for the Arts, MA; Athens Cultural Center, NY; Mountain Gallery, NY; Saratoga Arts, NY; Courthouse Gallery, NY; The Carey Institute, NY; Big Eye Gallery, NY; Woodstock Art School, The Gilboa Museum, The Arkeell Museum and Mountaintop Gallery, NY. Yolen has received numerous awards including the Cooperstown Art Association's 2023 National Juro's Citation, Albany Center Gallery's Honorable Mention Award, Fence Select and the Orchard Valley Ceramic Arts Guild Award. She studied at Bennington College (BA) and the College of Saint Rose (MA) and she continues to learn from renowned artists in regional workshop settings.

GLT WALKING TRAILS

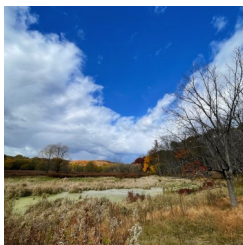
Greene Land Trust is dedicated to protecting the many places that make Greene County special. Visit and walk the trails at some of our protected spaces! Trail maps are available at greenelandtrust.org/explore.



Willows at Brandow Point

480 NY-385, Athens, NY

Brandow Point has over 1.5 miles of marked trails. There is an opening to the Hudson River with scenic views of the water.



Mawignack Preserve

52 Snake Rd, Catskill, NY

The 144-acre Mawignack Preserve offers a 1 mile loop trail which leads down to a meadow and along the Catskill Creek.



Coxsackie Creek Grassland Preserve

19 Houghtaling Rd, West Coxsackie, NY

CCGP offers a 1.3 mile trail which follows a winding portion of the Coxsackie Creek and includes views of the mountains, creek, and grasslands.

Thank you for attending the show. We appreciate your support!
Please consider continuing your support of conservation in
Greene County by becoming a Greene Land Trust member.

greenelandtrust.org