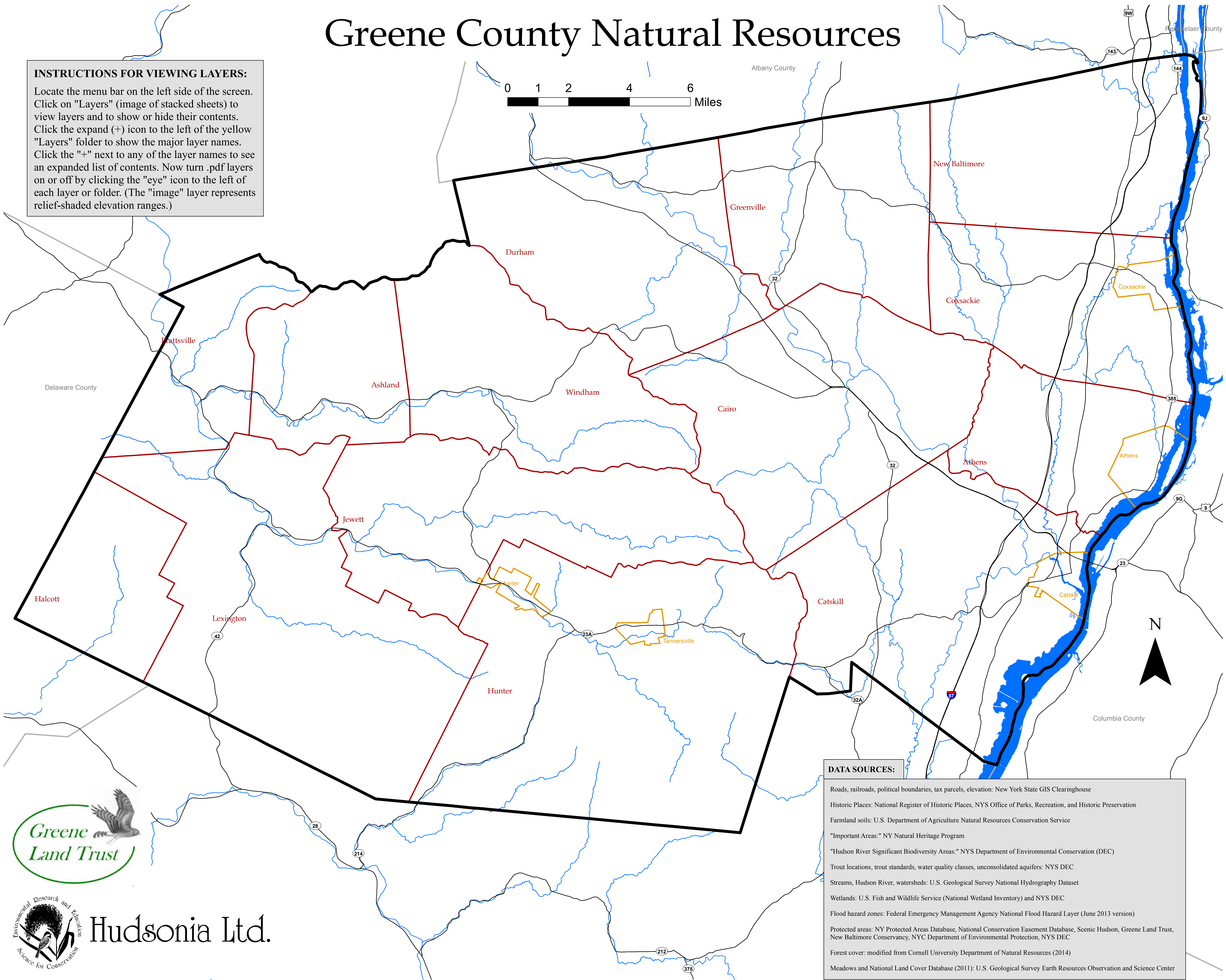


Greene County Natural Resources

INSTRUCTIONS FOR VIEWING LAYERS:

Locate the menu bar on the left side of the screen. Click on "Layers" (image of stacked sheets) to view layers and to show or hide their contents. Click the expand (+) icon to the left of the yellow "Layers" folder to show the major layer names. Click the "+" next to any of the layer names to see an expanded list of contents. Now turn .pdf layers on or off by clicking the "eye" icon to the left of each layer or folder. (The "image" layer represents relief-shaded elevation ranges.)



DATA SOURCES:

Roads, railroads, political boundaries, tax parcels, elevation: New York State GIS Clearinghouse
Historic Places: National Register of Historic Places, NYS Office of Parks, Recreation, and Historic Preservation
Farmland soils: U.S. Department of Agriculture Natural Resources Conservation Service
"Important Areas:" NY Natural Heritage Program
"Hudson River Significant Biodiversity Areas:" NYS Department of Environmental Conservation (DEC)
Trout locations, trout standards, water quality classes, unconsolidated aquifers: NYS DEC
Streams, Hudson River, watersheds: U.S. Geological Survey National Hydrography Dataset
Wetlands: U.S. Fish and Wildlife Service (National Wetland Inventory) and NYS DEC
Flood hazard zones: Federal Emergency Management Agency National Flood Hazard Layer (June 2013 version)
Protected areas: NY Protected Areas Database, National Conservation Easement Database, Scenic Hudson, Greene Land Trust, New Baltimore Conservancy, NYC Department of Environmental Protection, NYS DEC
Forest cover: modified from Cornell University Department of Natural Resources (2014)
Meadows and National Land Cover Database (2011): U.S. Geological Survey Earth Resources Observation and Science Center



Hudsonia Ltd.